

intellitiles  
**shift** 

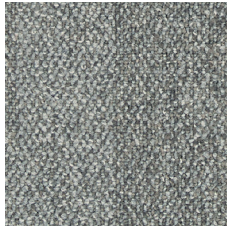


intelligent technology  
combined with smart benefits

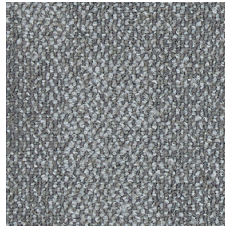
innovation & inspiration

| *Signature*<sup>®</sup>  
floorconcepts

for total flexibility & cost efficiency



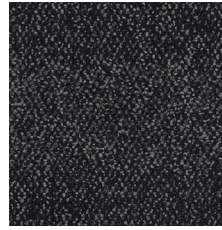
**modify** 1007



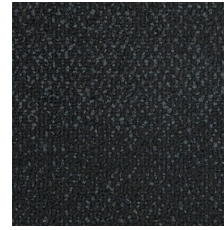
**develop** 9800



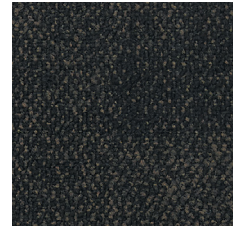
**convert** 9975



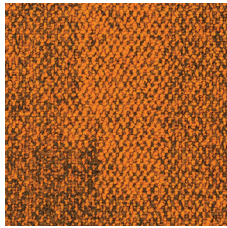
**adapt** 1799



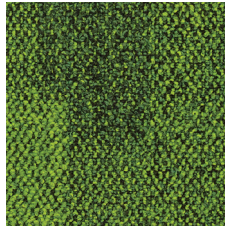
**alter** 1700



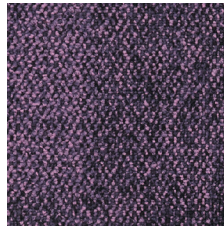
**amend** 1675



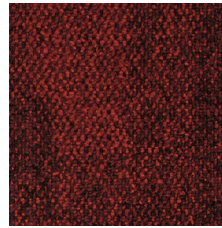
**revise** 5315



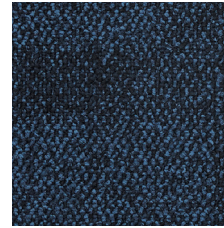
**renovate** 8902



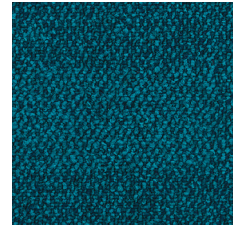
**remodel** 3365



**reshape** 2335



**revamp** 1940



**reform** 2131

**product construction yarn/fibre pile weight pile height gauge tile size total thickness**

intelli tiles, shift multi-level loop solution dyed nylon

646g/m<sup>2</sup>

4mm

1/10

500mm x 500mm

7.0mm (Thermo Bak™)

9.5mm (Comfi Bak®)

5sqm

5.0kg/m<sup>2</sup> (Thermo Bak™)

4.2kg/m<sup>2</sup> (Comfi Bak®)

<0.15%

Thermo Bak™, Comfi Bak®

**carton size total weight**

**dimensional stability backing**

**electrostatic propensity fire rating ISO 9239.1**

**recommended adhesive installation method**

**Comfi Bak® shapes stocked shapes custom**

**co-ordinates with availability**

<2.0kv

6.5 kw/m<sup>2</sup> critical radiant flux (Thermo Bak™)

9.0 kw/m<sup>2</sup> critical radiant flux (Comfi Bak®)

RLA Polymers GS300

quarter turn, directional, ashlar, brick

stocked all colours

hexagon, pentagon, right angle

50m<sup>2</sup> min

all intelli carpet tiles

in stock

**Traffic**



**Warranty**



**Fire**



**Stain/Soil**



GreenTag CERTIFIED



**Declare.**

*Signature*<sup>®</sup>  
floorconcepts

au 03 9401 0888

nz 0800 150 555

[signaturefloors.com.au](http://signaturefloors.com.au)

[signaturefloors.co.nz](http://signaturefloors.co.nz)